

Ch 6 Test tomorrow

6.1 Ratio and Proportion

simplify
same units

2 \angle s suppl.

1:3

$$1x + 3x = 180$$

6.2 Similar Polygons

\angle s \cong

sides proportional

6.3 Similar Triangles

SSS~, SAS~, AA~

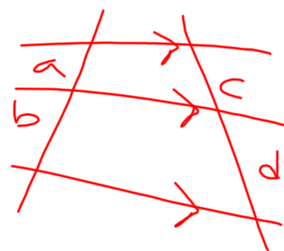
6.4 and 6.5

The rest of the proportions



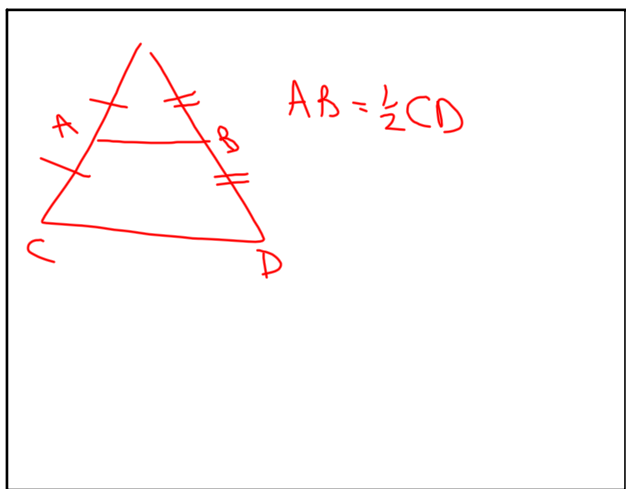
$$\frac{a}{b} = \frac{c}{d}$$

$$\frac{e}{f} = \frac{a}{a+b} = \frac{c}{c+d}$$

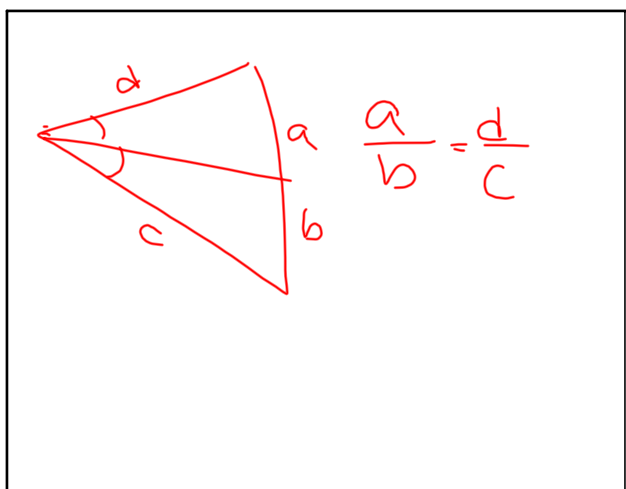


$$\frac{a}{b} = \frac{c}{d}$$

$$\text{If } a=b \\ c=d$$



perimeter
altitude
 $\angle B$
medians } all have
same ratio
as scale
factor
in $\sim \Delta s$



Complete packet from
yesterday and
p333-334
17-19, 22-26